

## LABORATORY OF INTEGRATIVE INTESTINAL ANTIVIRAL IMMUNOLOGY

### Lab

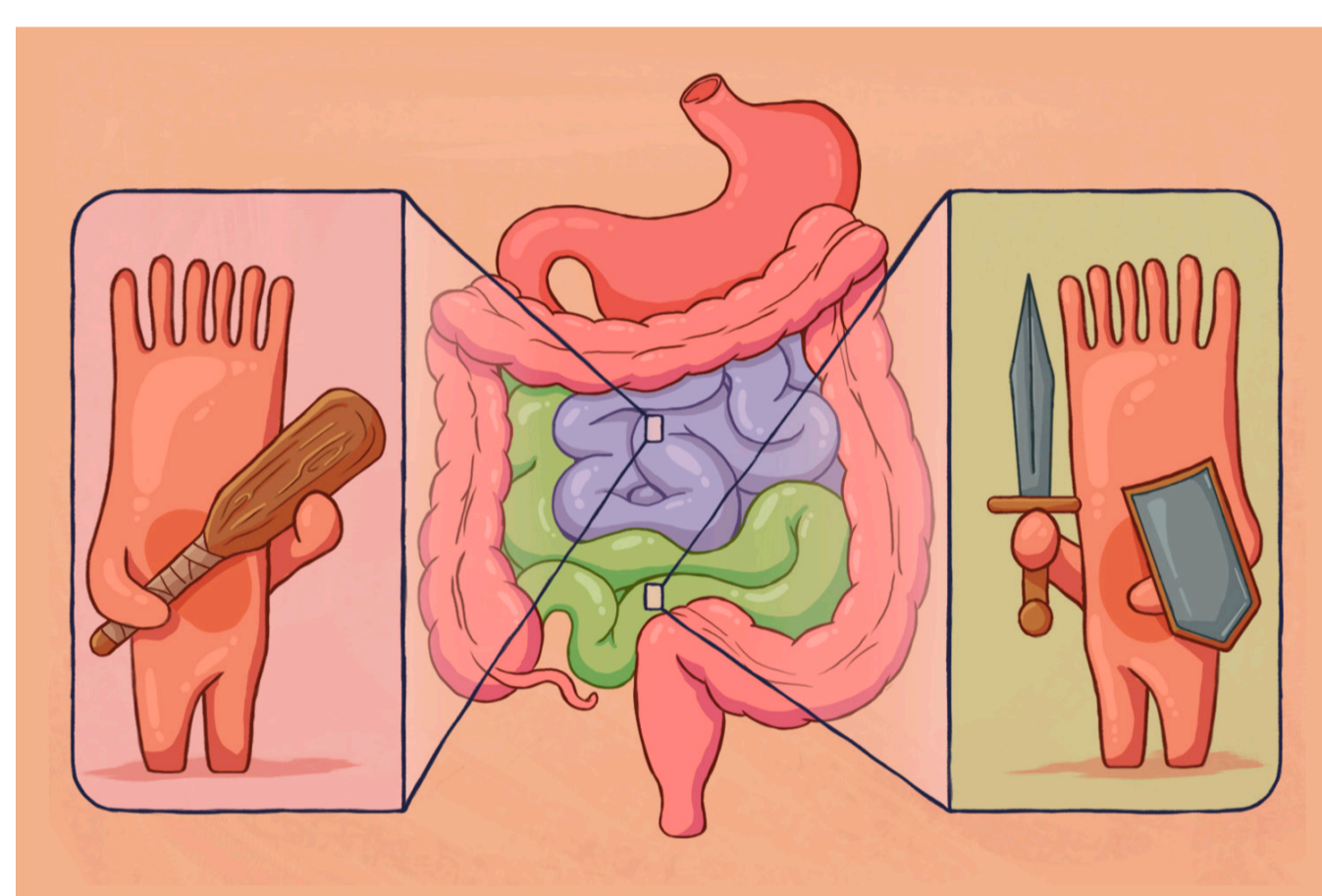
Our laboratory focuses on understanding how the intestinal epithelium (human and animal models) respond to enteric pathogen challenges. We aim at developing novel technologies and bioengineered surfaces to better mimic the gut microenvironment to address its impact on host/pathogen interactions, pathogenesis and outcome of infection. Our work satellites around three axes.

### Research



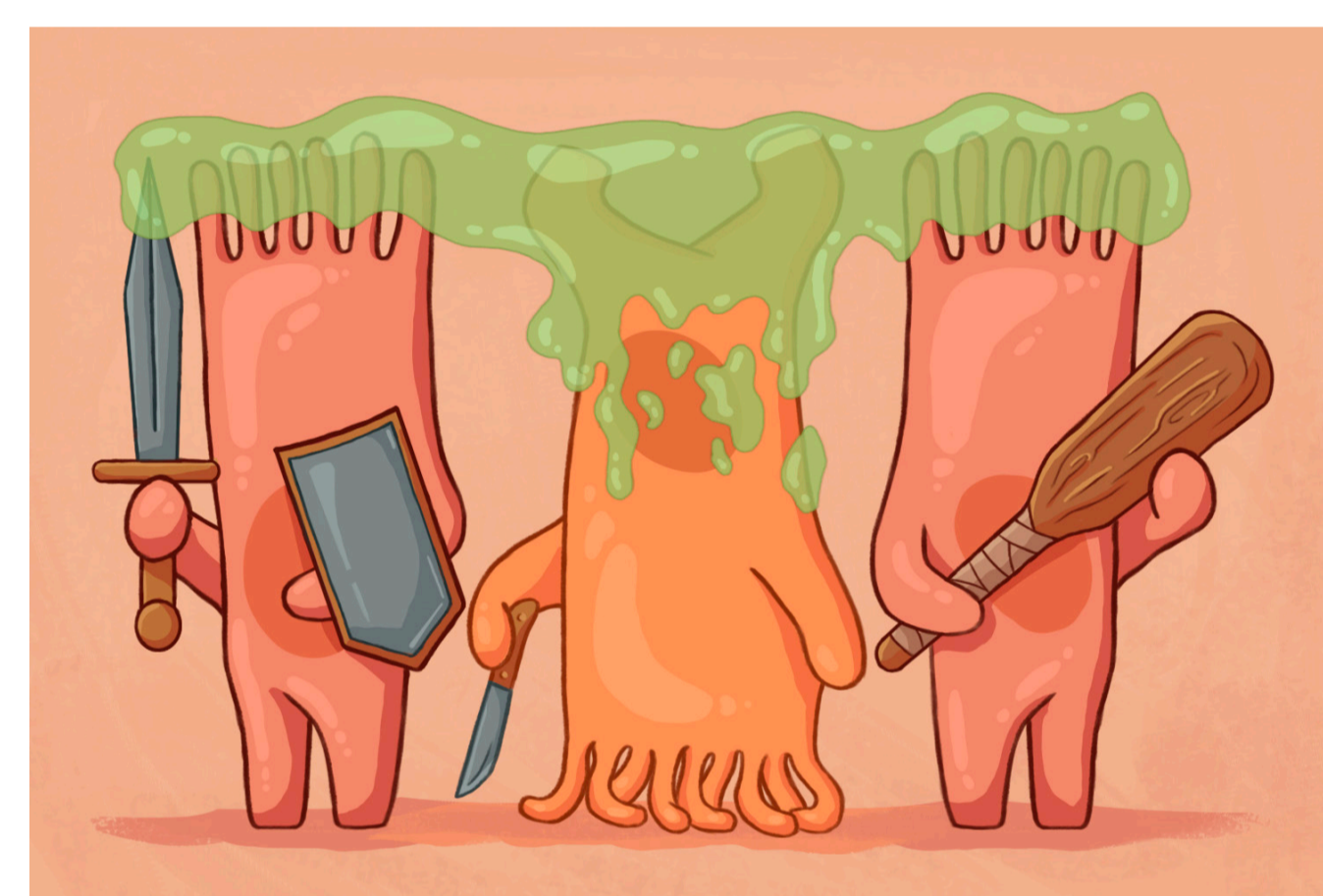
Impact of the gut specific microenvironment on host/pathogen interactions

[READ >](#)



Single cell approach to define host/enteric pathogen interactions in tissue and tissue-like environments

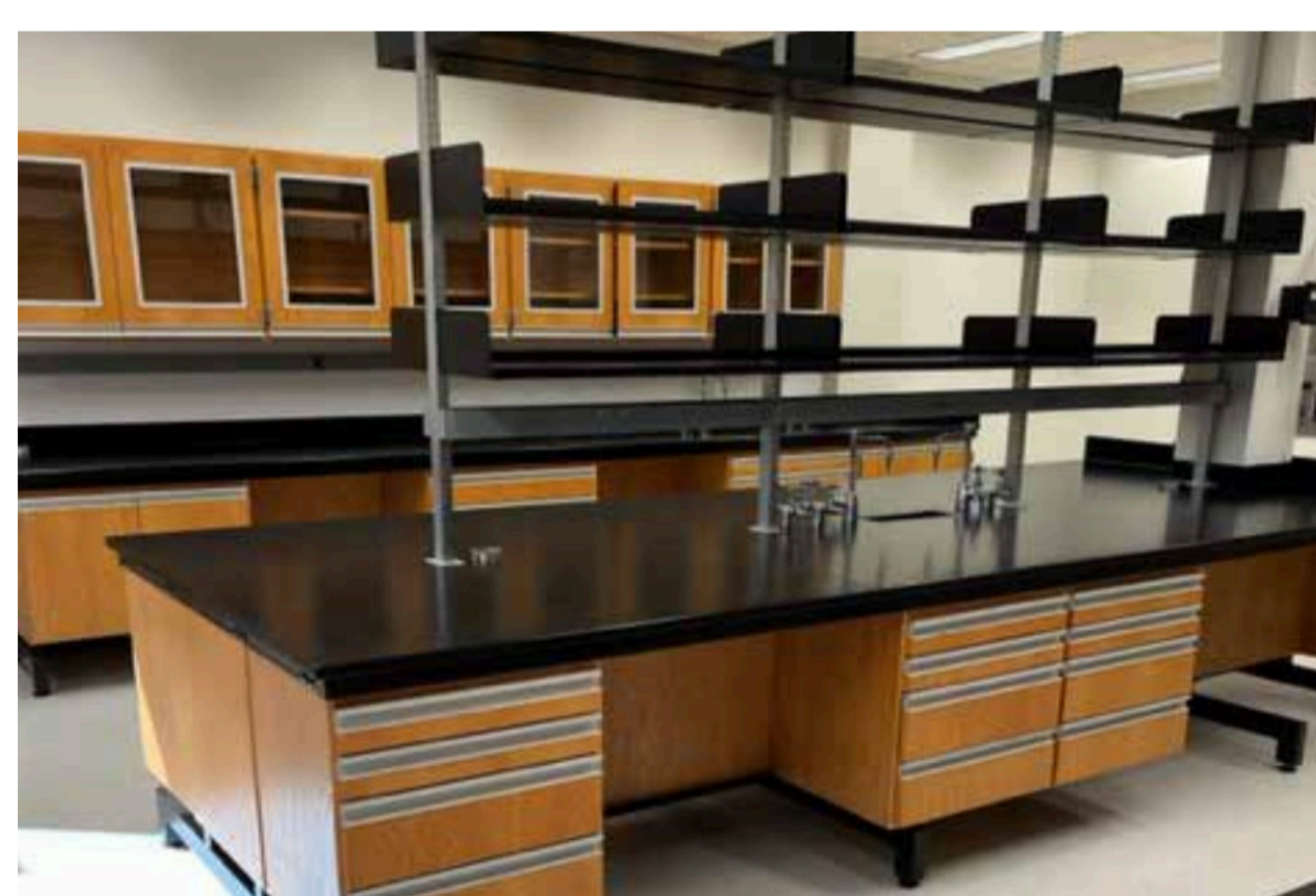
[READ >](#)



Molecular definition of cellular polarity and its impact on intestinal epithelium functions and host/pathogen interactions

[READ >](#)

### News



We are open and the new materials are on their way

August 01, 2022

[READ >](#)



We have lots of pipettes, now we are looking for motivated hands to use them!

August 01, 2022

[READ >](#)



Our new big toy has arrived! James seems to be very excited!

August 01, 2022

[READ >](#)

### Join Us

If you like fun and food, come join our team!

[CONTACT >](#)